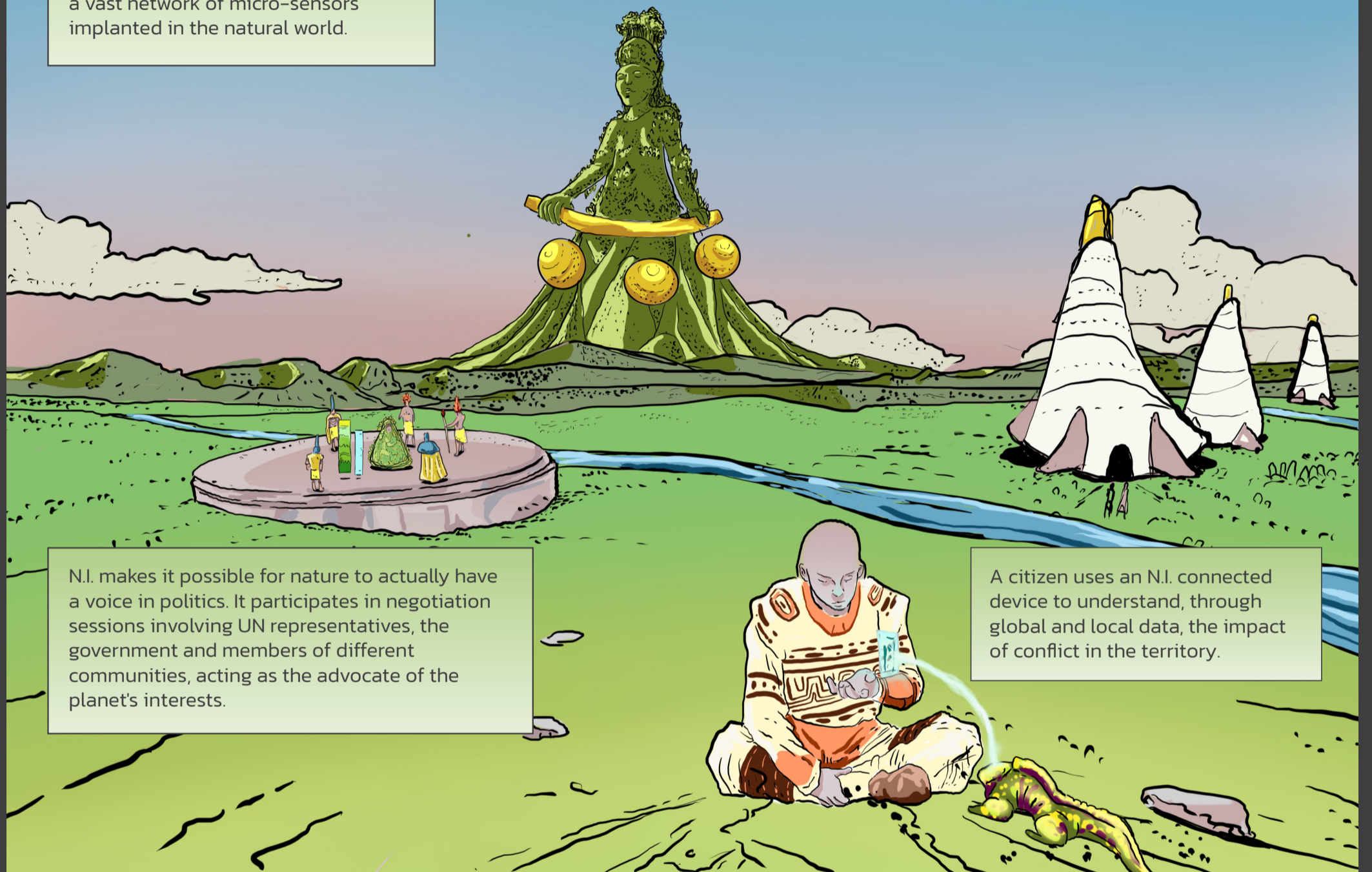


Natural Intelligence: The Voice of Nature

In a future not so far away...

Natural Intelligence (N.I.) is the most advanced planet-centric algorithm.

It is inspired by indigenous cosmogonies, and it operates through a vast network of micro-sensors implanted in the natural world.

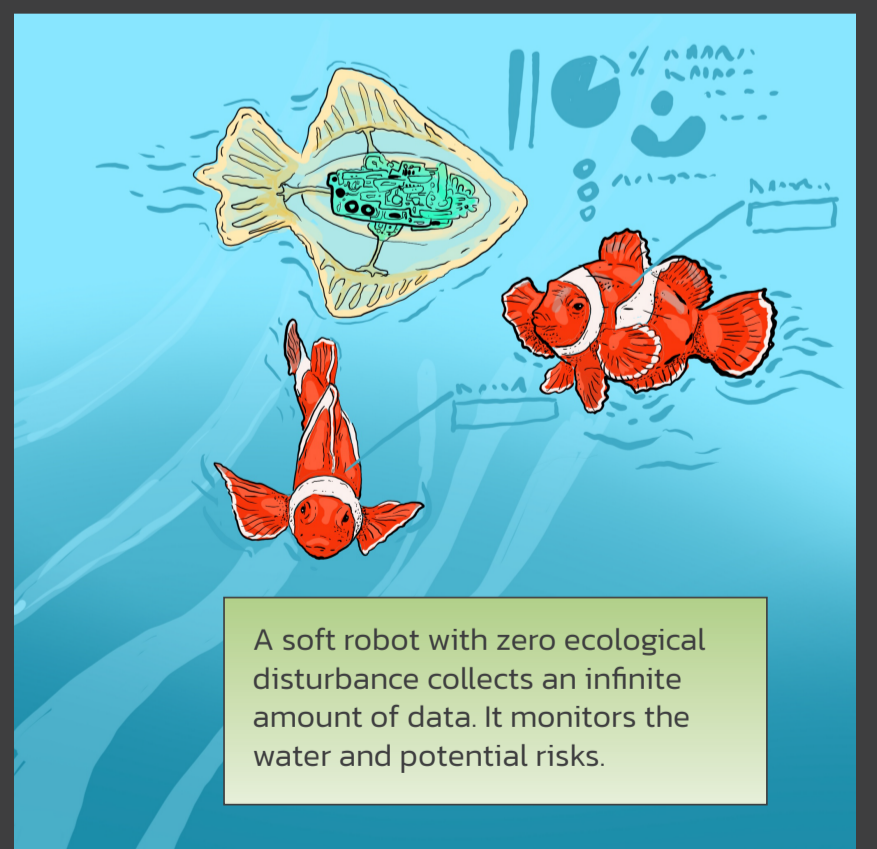


N.I. makes it possible for nature to actually have a voice in politics. It participates in negotiation sessions involving UN representatives, the government and members of different communities, acting as the advocate of the planet's interests.

A citizen uses an N.I. connected device to understand, through global and local data, the impact of conflict in the territory.



Wearables enable people to connect to nature through N.I. gadgets to discover what *she* needs.



A soft robot with zero ecological disturbance collects an infinite amount of data. It monitors the water and potential risks.

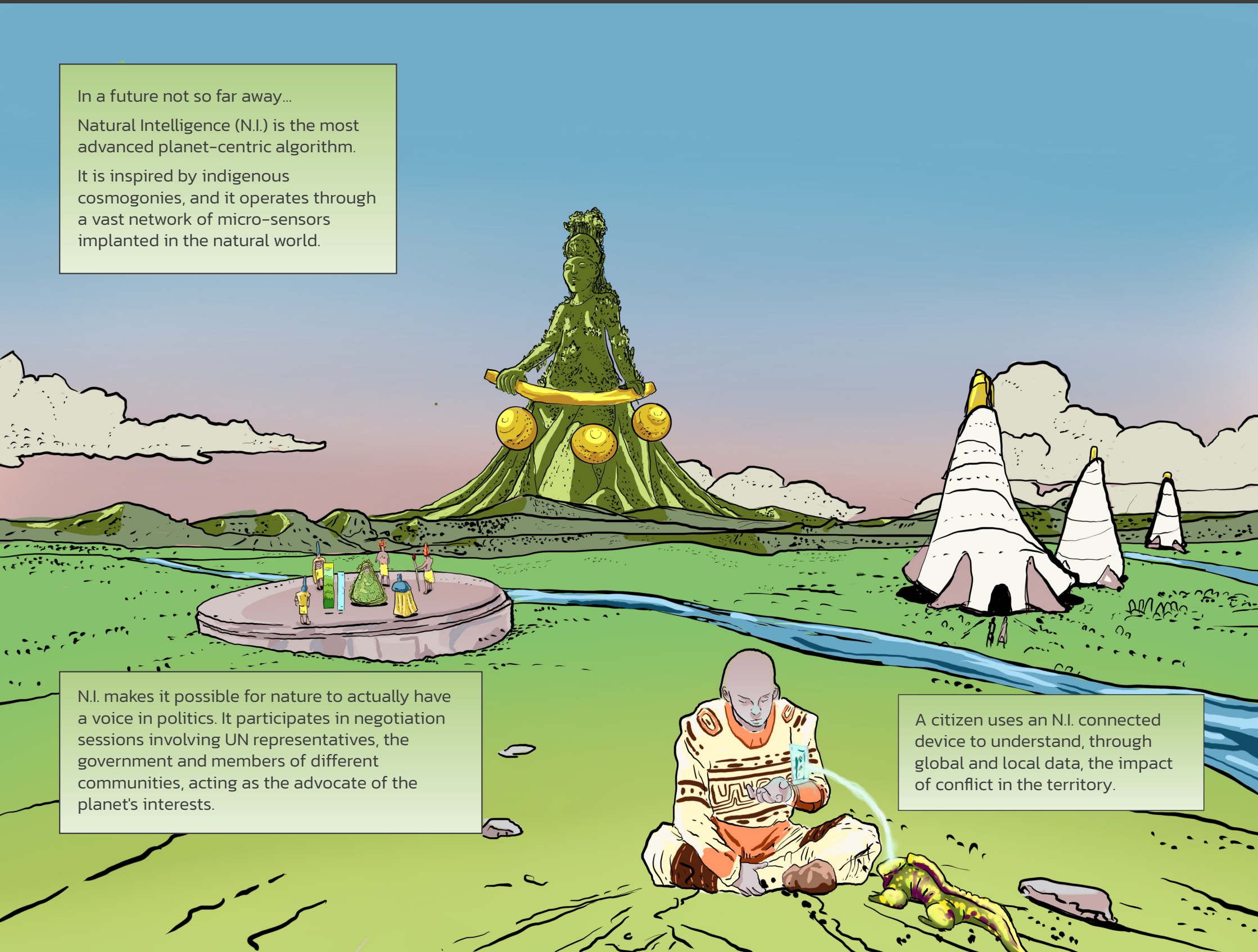
Colombia, 2045

Natural Intelligence: The *Voice* of Nature

In a future not so far away...

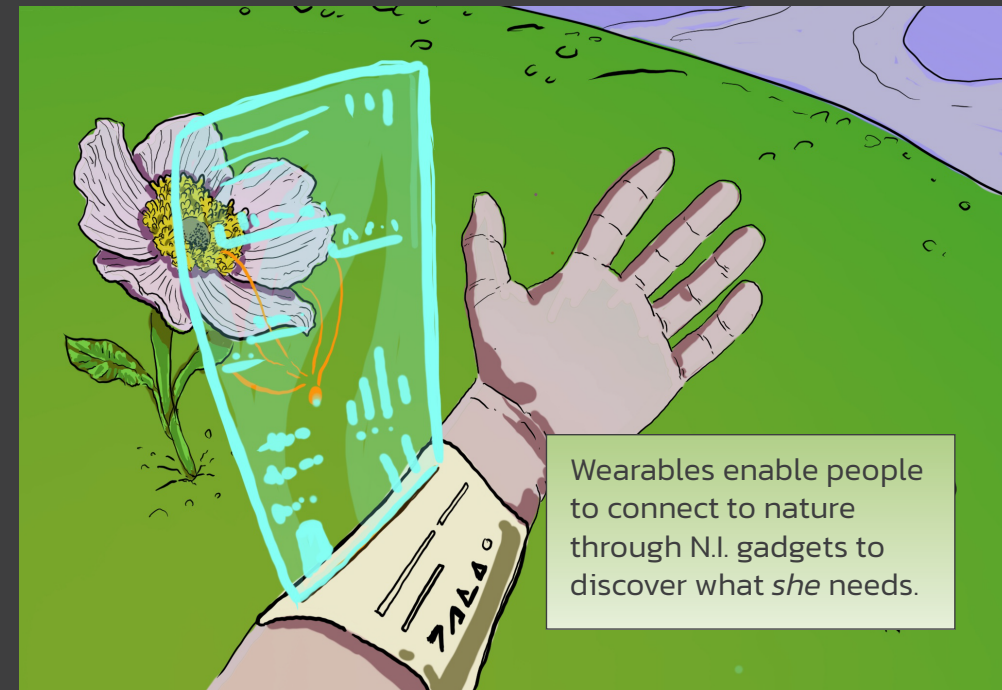
Natural Intelligence (N.I.) is the most advanced planet-centric algorithm.

It is inspired by indigenous cosmogonies, and it operates through a vast network of micro-sensors implanted in the natural world.

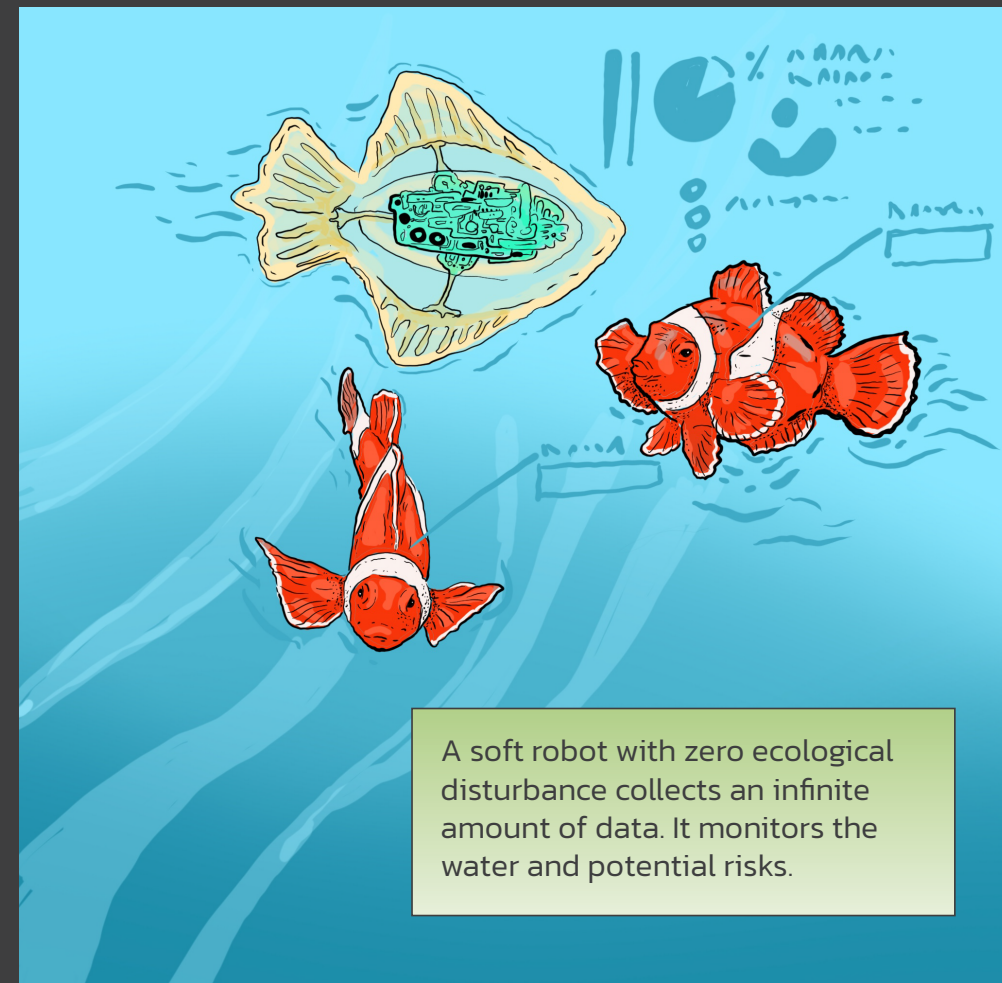


N.I. makes it possible for nature to actually have a voice in politics. It participates in negotiation sessions involving UN representatives, the government and members of different communities, acting as the advocate of the planet's interests.

A citizen uses an N.I. connected device to understand, through global and local data, the impact of conflict in the territory.



Wearables enable people to connect to nature through N.I. gadgets to discover what *she* needs.



A soft robot with zero ecological disturbance collects an infinite amount of data. It monitors the water and potential risks.